

Livotel

— HOTEL —

KASET NAWAMIN

FACT SHEET



WWW.LIVOTELHOTEL.COM

Location

Livotel Hotel Kaset - Nawamin is located on Kaset - Nawamin (Soi Prasert-Manukitch 2) and providing easy access to some key Bangkok's landmarks and attractions. Moreover, Kaset Nawamin road is major arterial road of Bangkok that connected to Phaholyothin Road, near Ratchadapisek Road, connected to Expressway Raminthra – Ananong and Kanchanapisek road (Outer Ring Road), easily way to Suvarnabhumi Airport, connected to Don Muang Tollway (Vibhavadi Rangsit Road), easily way to Don Muang airport

Traveling :

- By bus - Walk to the bus station, just 5 minutes.
- By taxi – On Kaset Nawamin road, (only 50 meters away from the hotel) there are taxis a lot.
- By Subway Station MRT - Phahonyothin Station is not far from the hotel. Drive a short while only.
- By car – There are a lot of entrance to get expressway such as Don Muang Tollway (4 Km.) , Expressway Raminthra – Ananong (6 Km.) and Expressway on Ratchadapisek Road (6 Km.).
- By plane : Distance , Taxi fare and take time between hotel and airport

Suvarnabhumi Airport 32 kilometer // taxi fare is about 250 baht // takes just 30 minutes.

Don Muang Airport 14 kilometer // taxi fare is about 150 baht // takes just 20 minutes.



Distance From :

Bank for Agriculture and Agricultural Cooperatives (BAAC)600 M
 Kasetsart University700 M
 Mayo Hospital1.2 Km
 Sripatum University2.5 Km
 Vibhavadi Hospital2.7 Km
 Avenue Kaset Nawamin4.8 Km
 MAJOR Cineplex Ratchayothin.....4.8 Km
 The Mall Ngam Wong Wan4.9 Km
 Pantip Ngam Wong Wan4.9 Km
 Provincial Electricity Authority (PEA) 6.0 Km
 Central Plaza Ladprao6.1 Km

Phaholyothin Station (MRT)6.1 Km
 Grand Soccer Pro6.3 Km
 The Walk (Index Furniture)6.8 Km
 Ministry of Public Health7.6 Km
 Chatuchak Market (JJ Market)8.9 Km
 IMPACT13.4 Km
 Don Muang Airport14.5 Km
 MBK20.4 Km
 Wat Arun Rajwararam25.8 Km
 Suvarnabhumi Airport..... 32.4 Km



Accommodations

Livotel Hotel Kaset - Nawamin is consist of 159 fully furnished residential units, categorized into 4 unit types, i.e. Standard , Deluxe , 1-bedroom , Family. All guestrooms are decorated in modern contemporary style and fully equipped with modern amenities – standard and 1-bedroom is equipped with kitchen utensils.

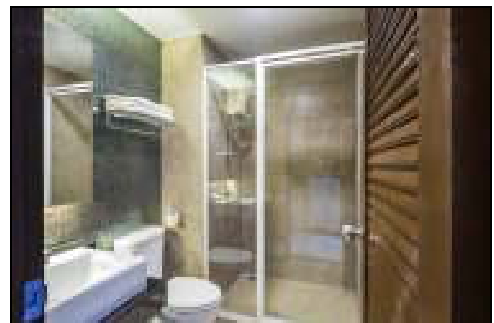
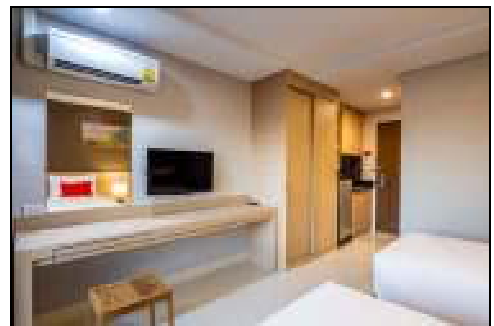
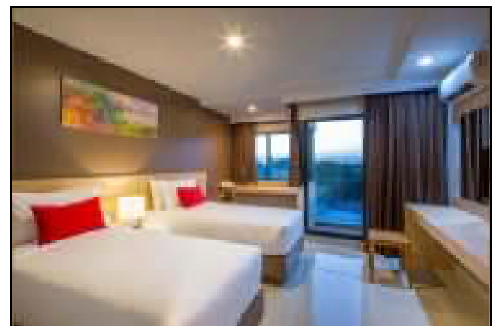
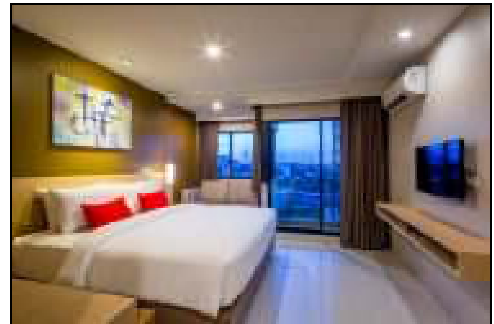
Food & Beverage are available on site. We also have 24-hour CCTV and security guards on duty. For car & bus parking, We have ample private car parking spaces are available at no cost for resident.

Some facts and figures about our accommodations :

Room Category	No. of rooms	Size in sq.m.	No. of Twin	No. of Double
Standard Room	145	27 sq.m.	100	45
Deluxe Room	5	34 sq.m.	-	5
1-Bedroom	7	47 sq.m.	-	7
Family Room	2	34 sq.m.	2	-

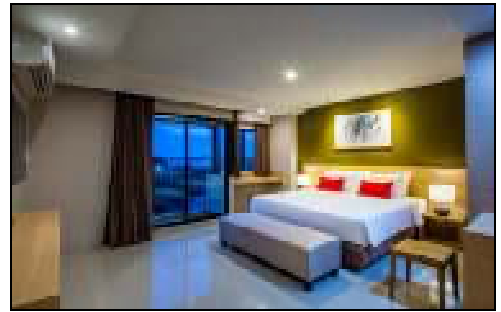
Standard Room (Twin / Double Bed Room) – 27 sq.m.

- Air - conditioning with individual control
- Mini – fridge & Safe box & Water heater
- 32” Colour LED TV
- Comfortable– sized dressing table with hairdryer
- Kettle & Coffee for 2 people
- Non – smoking room
- IDD Telephone & Flash reading lights
- Free Internet access via Wifi
- Working desk / Sofa (Choose one) with
Kitchen utensils
- Designed bathroom with Rain Shower
- Balcony
- Amenities in bathroom



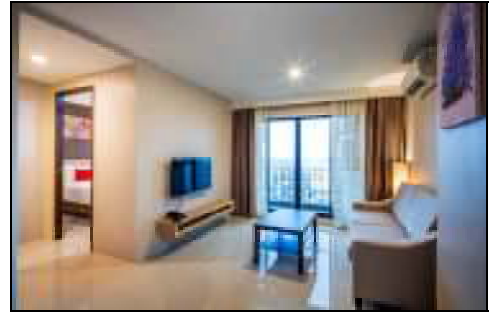
Deluxe Room – 34 sq.m.

- Air - conditioning with individual control
- Mini – fridge & Safe box & Water heater
- 40” Colour LED TV
- Comfortable– sized dressing table with hairdryer
- Kettle & Coffee for 2 people
- Non – smoking room
- IDD Telephone & Flash reading lights
- Free Internet access via Wifi
- Working desk & Sofa
- Designed bathroom with Rain Shower
- Ample Balcony
- Amenities in bathroom



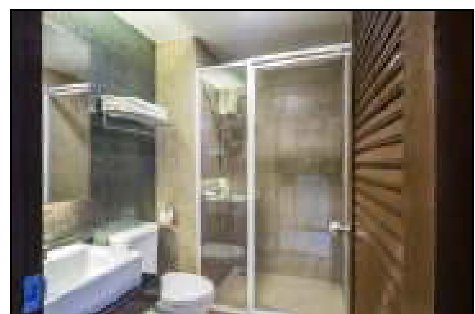
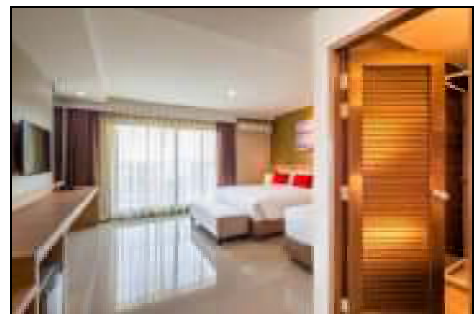
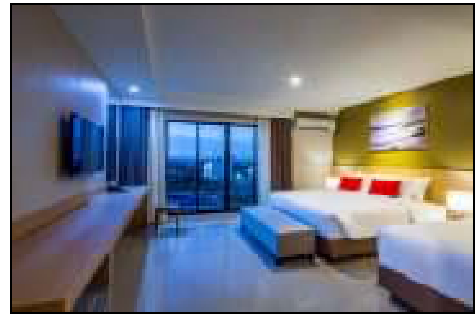
1-Bedroom – 47 sq.m.

- Air-conditioning for Bedroom & Living room
- Mini-fridge & Safe box & Water heater
- Kettle & Coffee for 2 people
- 40” Colour LED TV for Living room
& 32” Colour LED TV for Bedroom
- Comfortable– sized dressing table with hairdryer
- Non – smoking room
- IDD Telephone & Flash reading lights
- Free Internet access via Wifi
- Sofa set / Dining table with Kitchen utensils
- Designed bathroom with Rain Shower & Bathtub
- Ample Balcony
- Amenities in bathroom



Family Room – 34 sq.m.

- There are 2 Bed , 6-foot & 3-foot bed
- Air - conditioning with individual control
- Mini-fridge & Safe box & Water heater
- 40” Colour LED TV
- Comfortable– sized dressing table with hairdryer
- Kettle & Coffee for 2 people
- Non – smoking room
- IDD Telephone & Flash reading lights
- Free Internet access via Wifi
- Working desk & Sofa
- Designed bathroom with Rain Shower
- Ample Balcony
- Amenities in bathroom



Food & Beverage (Dining Room)

Livotel Hotel's Food & Beverage Dining Room is located on the ground floor near lobby.

We provide conventional food & beverage menus for breakfast. That is combining creativity and taste that you won't find it elsewhere.





Services & Facilities

- ❖ Lobby
- ❖ Restaurant (capacity 120 people)
- ❖ Fitness Room
- ❖ Elevator 2 units to facilitate the passengers.
- ❖ More than 60 parking spaces and a parking lot with tour.
- ❖ Broadband internet (Wifi) free.
- ❖ Hotel-locking door and Safe box in bed room
- ❖ CCTV systems , Fire protection systems , 24-hour security









Contact us

Livotel Hotel Kaset - Nawamin

Address : 333 Soi Prasert - Manukitch 2 (Soi Phaholyothin 34)

Chatuchak , Bangkok 10230

Tel. : +66 (0) 2941-9901-3

Fax : +66 (0) 2941-9904

Mobile : +66 (0) 95 909 7000

E-mail : LIVOTELHOTEL.K2@gmail.com

Website : WWW.LIVOTELHOTEL.COM

Facebook : [LIVOTELKASETNAWAMIN](#)

Map of Livotel Hotel Kaset-Nawamin

