

# Livotel

— HOTEL —

LAT PHRAO

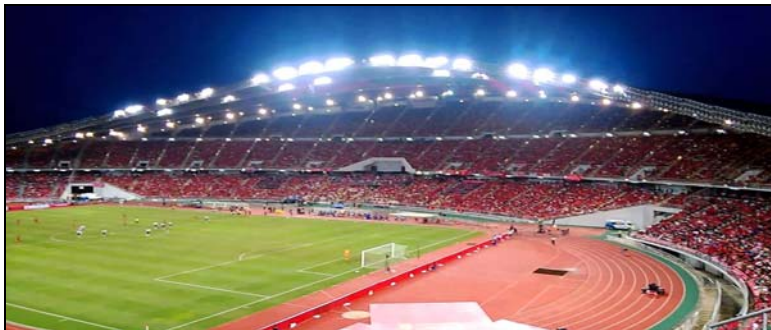
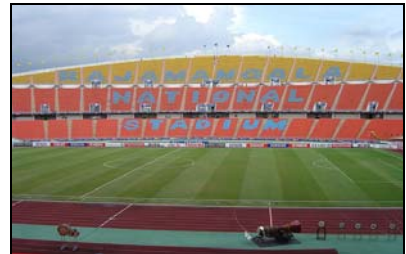
## FACT SHEET



[WWW.LIVOTELHOTEL.COM](http://WWW.LIVOTELHOTEL.COM)

## Location

Livotel Hotel Lat Phrao is ideally located on Lat Phrao 130 (Ramkhamhaeng 81 Alley), providing easy access to some key Bangkok's landmarks and attractions such as Rajamangala National stadium, Ramkhamhaeng University, Museum of Buddhism Art, Rama IX Royal Park, Wat Thep Lila as well as shopping areas, The Mall (Bang Kapi), Tesco Lotus and Makro. The shuttle boat service station is a 5-minute walk away, which takes you to the shopping areas (Central world, Siam Ocean world, the Platinum fashion mall) as well as Bangkok's cultural spots (the Grand Palace, the Reclining Buddha and Temple of Dawn).



## Traveling

### **Ramkhamhaeng – By Boat (Wat Klang Pier)**

The Saen Saep Express Boat service runs on the canal of the same name, and is traffic free. The service runs about every 5 to 10 minutes and as the canal is exactly parallel to Ramkhamhaeng Road with many stops along that road (at some distance).

**See [http://www.transitbangkok.com/khlong\\_boats.html](http://www.transitbangkok.com/khlong_boats.html) for all stops / piers. It is a fast and inexpensive way of transport as a single trip costs about 10 to 20 baht, depending on the distance travelled.**

### **Ramkhamhaeng – By public transit (Airport Rail Link)**

Opened in August 2010, the Airport Rail Link (ARL) is an alternative way of getting in to Ramkhamhaeng area. The City Line of the service has a stop at Ramkhamhaeng, which is the utter southwest of the district at the beginning of Ramkhamhaeng Road. There is a district service from Suvarnabhumi Airport in the east, as well as from Phaya Thai, Ratchaprarop and Makkasan stations in the west. Do NOT take the Express line as it skips Ramkhamhaeng completely.

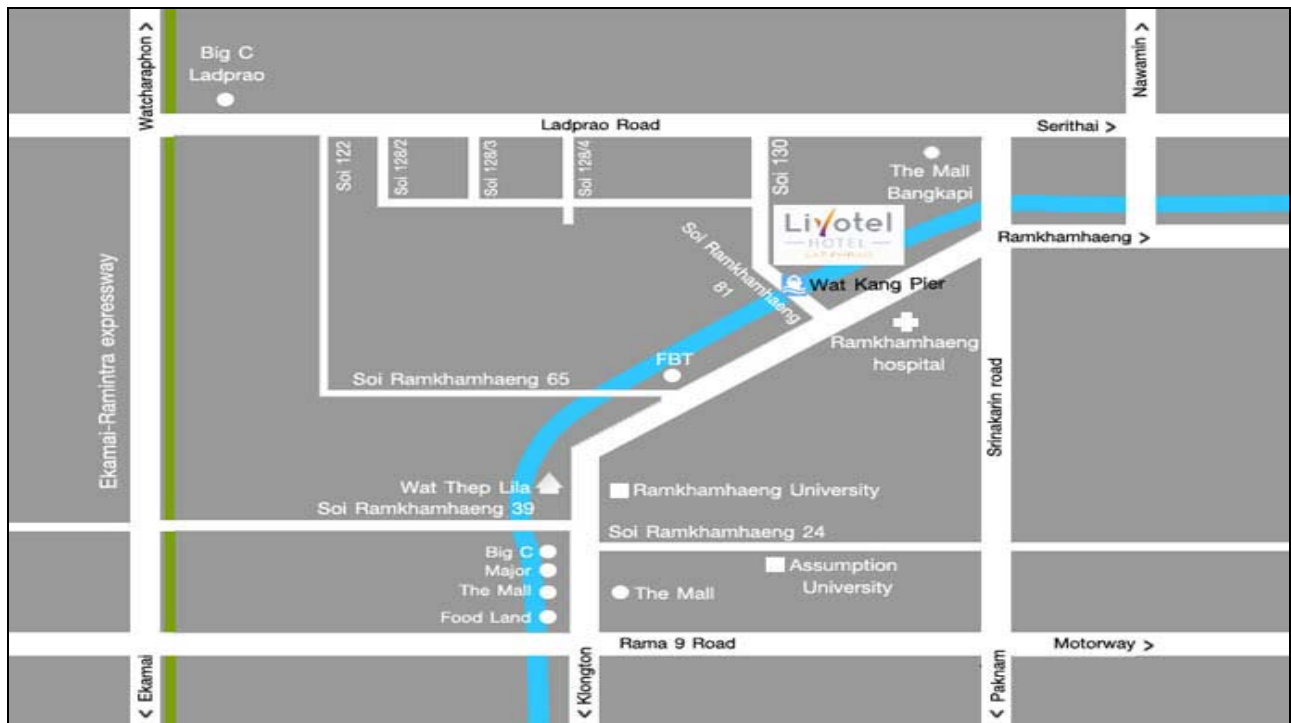
### **Ramkhamhaeng / Lat Phrao – By MRT (underground)**

Livotel Hotel Lat Phrao is located in Soi Lat Phrao 130 (Ramkhamhaeng 81 Alley) is in easy distance from MRT station (Lat Phrao). With MRT efficient service, it connects travelers to the inner city of Bangkok in minutes.

**<http://www.bangkokmetro.co.th/map.aspx?Lang=En&Menu=8&Sid=14>**

**Distance From :**

Wat Klang Pier – Boat Taxi.....	200 M	Central world plaza.....	14.8 Km
Makro.....	1.5 Km	Siam ocean world.....	16.2 Km
Tawanna Shopping Mall.....	1.6 Km	Siam Paragon Shopping Mall .....	16.2 Km
The Mall (Bang Kapi).....	1.7 Km	Museum of Buddhism Art.....	19.9 Km
Rajamangala National Stadium.....	2.0 Km	Suvarnabhumi Airport.....	21.5 Km
Ramkhamhaeng University.....	2.6 Km	Rama IX Royal Park.....	21.7 Km
Wat Thep Lila.....	3.0 Km	The Reclining Buddha (Wat Pho)....	22.0 Km
Tesco Lotus (Bang Kapi).....	3.3 Km	Don Muang Airport .....	23.9 Km
The Platinum Fashion Mall.....	14.4 Km	Temple of Dawn (Wat Arun) .....	26.3 Km



## Accommodations

Livotel Hotel Lat Phrao is consist of 112 fully furnished residential units, categorized into 3 unit types, i.e. Deluxe , 1-bedroom , Family. All guestrooms are decorated in modern contemporary style and fully equipped with modern amenities – 1-bedroom is equipped with kitchen utensils.

Food & Beverage are available on site. We also have 24-hour CCTV and security guards on duty. For car & bus parking, We have ample private car parking spaces are available at no cost for resident.

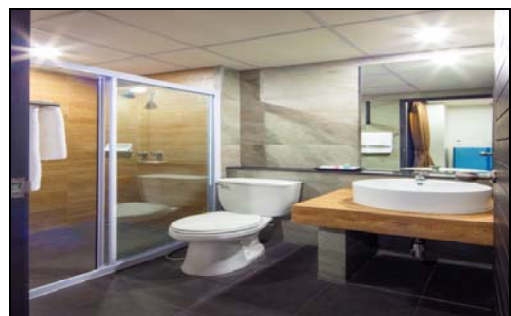
Some facts and figures about our accommodations :

<b>Room Category</b>	<b>No. of rooms</b>	<b>Size in sq.m.</b>	<b>No. of Twin</b>	<b>No. of Double</b>
<b>Deluxe Room</b>	80	27 sq.m.	75	5
<b>1-Bedroom</b>	20	35 sq.m.	-	20
<b>Family Room</b>	12	30 sq.m.	12	-



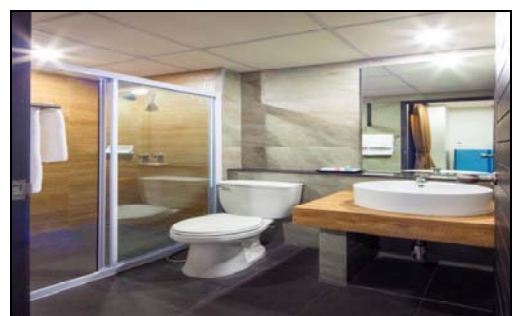
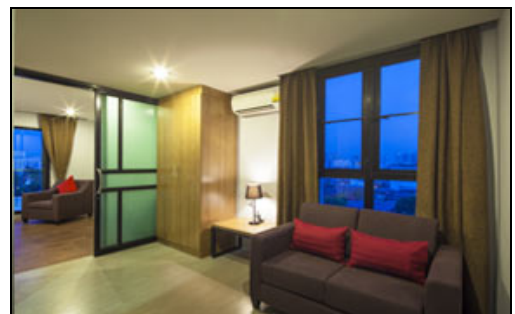
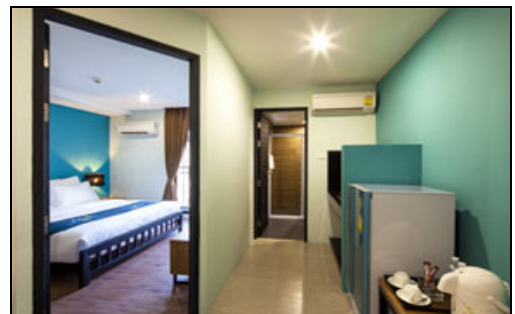
## Deluxe Room (Twin / Double bed room) – 27 sq.m.

- Air - conditioning with individual control
- IDD Telephone & Flash reading lights
- Mini – fridge & Safe box & Water heater
- 32” Colour LED TV
- Comfortable-sized dressing table
- Kettle & Coffee for 2 people
- Non – smoking room
- Free Internet access via Wifi
- Working desk / wake-up calls
- Designed bathroom with shower
- Amenities in bathroom
- Ample Balcony



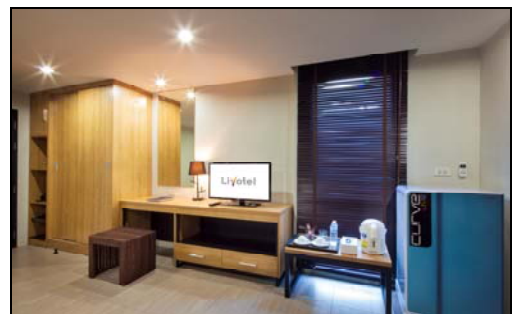
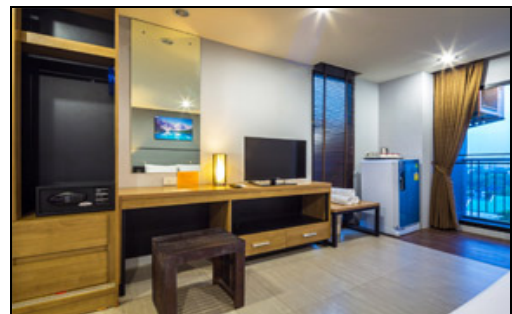
## 1-Bedroom – 35 sq.m.

- One Bedroom Suite with one living room
- Air - conditioning with individual control
- IDD Telephone & Flash reading lights
- Mini – fridge & Safe box & Water heater
- 32” Colour LED TV
- Comfortable-sized dressing table
- Kettle & Coffee for 2 people
- Non – smoking room
- Free Internet access via Wifi
- Sofa / Working desk / wake-up calls
- Designed bathroom with shower
- Amenities in bathroom
- Kitchenette area (\*is only available on some unit)



## Family Room – 30 sq.m.

- One 6-feet bed and One 3.5-feet bed
- Air - conditioning with individual control
- IDD Telephone & Flash reading lights
- Mini – fridge & Safe box & Water heater
- 32” Colour LED TV
- Comfortable-sized dressing table
- Kettle & Coffee for 2 people
- Non – smoking room
- Free Internet access via Wifi
- Sofa / Working desk / wake-up calls
- Designed bathroom with shower
- Amenities in bathroom
- Ample Balcony





## Food & Beverage ( Dining Room)

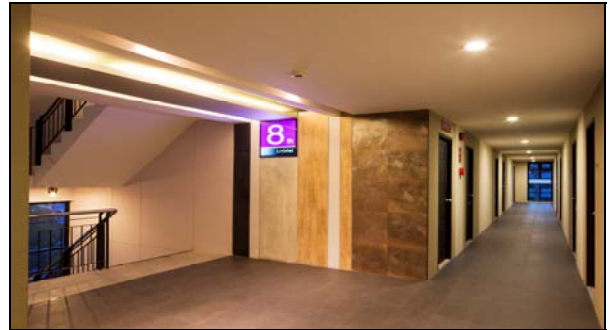
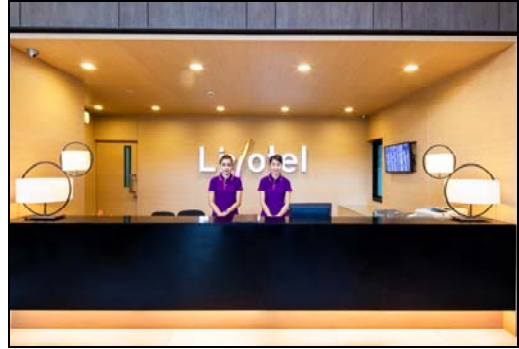
Livotel Hotel's Food & Beverage Dining Room is located on the ground floor near lobby. We provide conventional food & beverage menus for breakfast, , during the day, you will find a different A-La-Carte menu that is combining creativity and taste that you won't find it elsewhere.



## Services & Facilities

- ❖ Ample lobby ( indoor & outdoor lobby )
- ❖ Restaurant ( capacity 100 people )
- ❖ Conference Room & Seminar Room ( capacity 50 people )
- ❖ Elevators 1 units to facilitate the passengers.
- ❖ More than 30 parking spaces and a parking lot with tour.
- ❖ Broadband internet ( Wifi ) free.
- ❖ Hotel-locking door
- ❖ CCTV systems , Fire protection systems , 24-hour security
- ❖ Safe box in bed room
- ❖ Beverage vending machine
- ❖ Coffee Shop (Food & Beverage)

**Livotel**  
HOTEL  
LAT PHRAO









## Contact us

### **Livotel Hotel Lat Phrao**

**Address** : 707 Soi Lat Phrao 130 ( or Ramkhamhaeng 81 )

Lat Phrao Rd. , Bang Kapi , Bangkok 10240

**Tel.** : +66 (0) 2 138 7505

**Fax** : +66 (0) 2 138 7511

**Mobile** : +66 (0) 86 404 6000

**E-mail** : LIVOTELHOTEL.L130@gmail.com

**Website** : WWW.LIVOTELHOTEL.COM

**Facebook** : LIVOTELLATPHRAO



Map of Livotel Hotel Lat Phrao

